

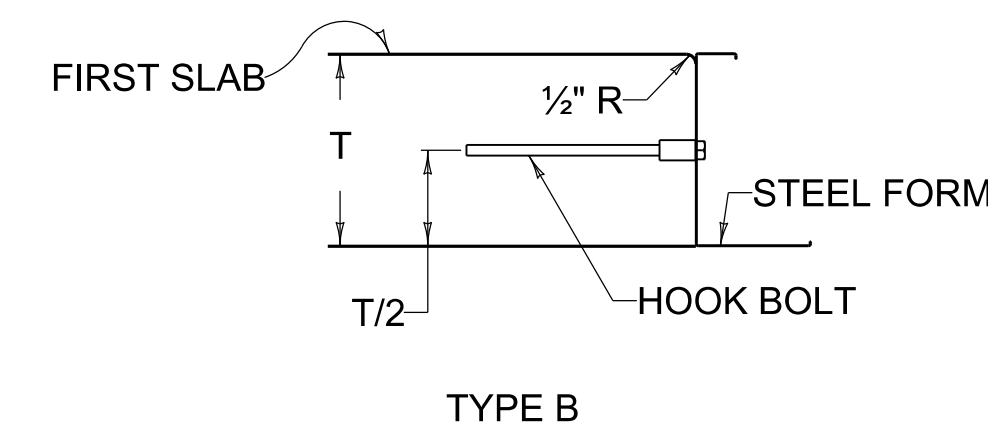
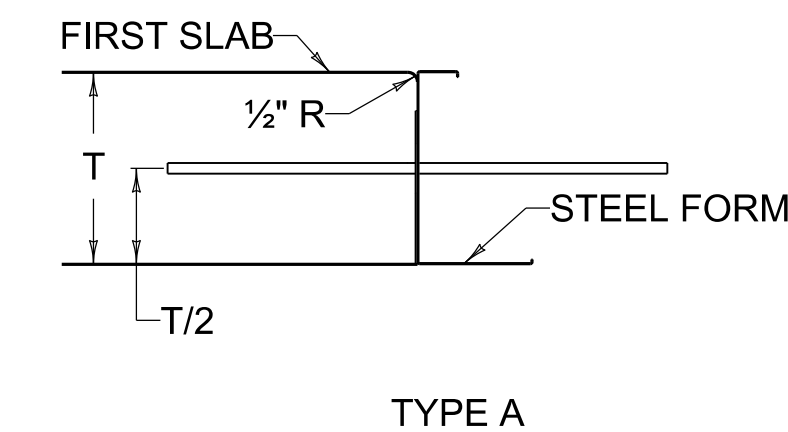
~ NOTES ~

- LONGITUDINAL JOINTS SHALL BE USED WHEN SHOWN ON THE TYPICAL SECTION, AND STANDARD DRAWINGS AND SHALL BE CONSTRUCTED AS SHOWN ON THIS DRAWING.
- LONGITUDINAL CONSTRUCTION JOINTS BETWEEN ADJOINING SLABS, AND PAVED IN SEPARATE OPERATIONS SHALL USE HOOK-BOLTS OR TIE BARS AND BE CONSTRUCTED AS SHOWN ON THIS DRAWING.
- IN LIEU OF THE DEFORMED TIE BARS THE CONTRACTOR SHALL BE PERMITTED TO USE EITHER ALT. 1 OR ALT. 2 HOOK BOLT AS DETAILED.
- DEFORMED TIE BARS USED IN TRANSVERSE CONSTRUCTION JOINTS SHALL BE NO CLOSER THAN 6" TO THE PAVEMENT EDGE OR ANY LONGITUDINAL JOINT.
 - NO. 5 DEFORMED TIE BAR 2'-6" LONG PLACED 1'-8" ON CENTER AND PLACED 1'-8" MINIMUM FROM ANY TRANSVERSE JOINT.
 - EXPANSION ANCHOR FOR BOLT SIZE INDICATED SHALL BE BETHLEHEM MINE ROOF EXPANSION TYPE WITH K-1 SHELL, PHILLIPS RED HEAD ANCHOR, CHICAGO EXPANSION BOLT CO. - SPECIAL FLUSH SELF DRILLING ANCHOR, OR APPROVED TYPE. INSTALLATION SHALL CONFORM TO MANUFACTURER'S RECOMMENDATION. HOOK BOLTS WITH EXPANSION ANCHORS ATTACHED SHALL NOT BE LESS THAN 14" IN LENGTH. HOOK BOLTS WITH EXPANSION ANCHORS SHALL BE SPACED 5'-0" O.C.

USE WITH CUR. STD. DWGS.
RPN-001 RPN-010 RPN-015
RPN-020 RPS-030 RPS-031
RPS-032 RPS-033 RPS-034
RPS-035 RPS-036 RPS-037
RPS-038 RPS-039 RPX-010
RPX-015 RPX-020

JOINT SYMBOLS

- LONGITUDINAL SAWED JOINT
- LONGITUDINAL SAWED CONSTRUCTION JOINT
- TRANSVERSE SAWED CONTRACTION JOINT
- TRANSVERSE SAWED CONSTRUCTION JOINT (1'-0" MIN.)
- TRANSVERSE EXPANSION JOINT
- LONGITUDINAL SAWED JOINT (WITHOUT TIE BARS)
- LONGITUDINAL SAWED CONSTRUCTION JOINT (WITHOUT TIE BARS)
- TRANSVERSE SAWED CONTRACTION JOINT (WITHOUT LOAD TRANSFER ASSEMBLY)
- TRANSVERSE SAWED CONSTRUCTION JOINT (WITHOUT TIE BARS)
- 1/2" TRANSVERSE EXPANSION JOINT (WITHOUT LOAD TRANSFER ASSEMBLY)



METHODS OF FORMING CONSTRUCTION JOINTS WHEN FORMS ARE USED

REVISION DATE: 12/01/2015
REVISION NUMBER: 0

SUBMITTED 12-01-2015 DATE
DIVISION DIRECTOR
APPROVED 12-01-2015 DATE
STATE HIGHWAY ENGINEER

PAVEMENT



COMMONWEALTH OF KENTUCKY
DEPARTMENT OF HIGHWAYS



CONCRETE PAVEMENT JOINTS

CONCRETE PAVEMENT JOINT DETAILS

STANDARD DRAWING NUMBER
RPS-010-11